

TraxxShield100™ Features and Benefits

Suppresses Water Vapor Emission from Concrete up to 100% RH, and suppresses pH of 14.
Stops alkalinity, emulsifying of adhesive, mold/mildew, and most flooring damage from moisture.

Peel-&Stick Installation Method

- Adheres to the concrete slab.
- Completely secured flooring system virtually eliminates the effects of “rolling loads”.
- Quick and easy, as floor is installed in one day — not several days as with 2-part epoxy systems.
- No curing time. No fumes. No dust. No VOCs.
- Zero telegraphing seams.

Saves Money, Labor and Time

- Cost of job is reduced by as much as 50% vs. 2-part epoxy systems.
- Finished floor coverings can be laid immediately after TraxxShield100™ is installed.
- No downtime. Can eliminate days from the project schedule.
- Little waste and no clean up.



Anti-Fracture Properties

Great for ceramic tile as it provides strength and flexibility to bridge horizontal cracks up to 3/8” without transferring the stress load to the finished tile topping.

Acoustical Properties

Greater acoustical values than any other rolled moisture barrier! The Uniform Building Code mandates 50/50 minimum for sound absorption, and TraxxShield100™ gives you 53 STC and 52 IIC.

Install a Wide Variety of Flooring Products Over TraxxShield100™

Install with confidence under Carpet Tile, Broadloom, VCT, LVT, LVP, SVT, Static Dissipative Tile, Ceramic Tile, Laminates, and over Radiant Flooring Systems. **Approved on most commercial-grade sheet vinyl** (see our website for the most current approval list).

Mold & Fungus Resistance

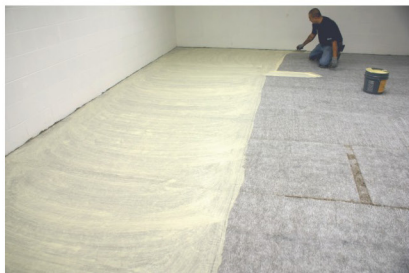
No growth of mold/fungus as tested per ASTM D3273.

TraxxShield100™ Does It All

One product gives you moisture vapor protection for most all conditions. No need carrying inventory of 80%, 95%, and 99% products as with other brands.

10-Year Warranty

Protects the flooring system integrity for years to come. TraxxShield100™ does not degrade and will outlive the finished flooring.



TRAXXSHIELD 100
ROLLED MOISTURE BARRIER™

