

**Precision Engineering  
Automated Manufacturing  
Lifetime Warranty**

**MATRIX<sup>TM</sup>**  
ENGINEERED UNDERLAYMENT

*for Vinyl & Ceramic Tile Floors*

**TRAXX**  
CORPORATION

# Everything Else is Plywood

It's been said that beauty is only skin deep. It is not true, at least insofar as our new MATRIXX™ Engineered Underlayment is concerned. For perfection in vinyl and ceramic tile installations, nothing else is quite so beautiful from the inside out.

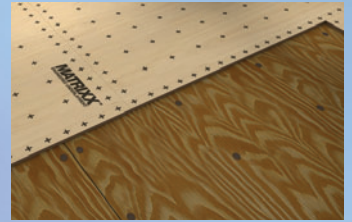
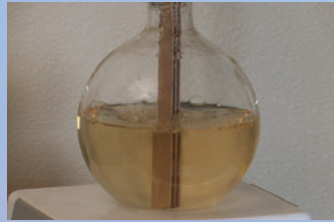
MATRIXX™ Engineered Underlayment is constructed using premium birch uniquely laminated with exterior grade glue. So what? This means that, unlike other underlayment products, MATRIXX™ Engineered Underlayment is virtually impervious to moisture. It resists swelling and will not delaminate even under the most demanding applications. And, it is warranted for life.

MATRIXX™ Engineered Underlayment is dimensionally accurate making installation nearly effortless. Corner-to-corner tolerance is less than 1/32-inch. Variation in thickness is nearly zero. You get a level, TileTite™ fit every time with seams that are virtually seamless.

MATRIXX™ Engineered Underlayment is available in 6mm and 9mm thicknesses and is laboratory proven. Every square inch of every sheet undergoes ultrasonic “pinging” to ensure the absence of hidden voids. You won't find surprising bubbles or depressions in your vinyl installations resulting from hidden flaws inside your underlayment. We don't ship potential problems just because you can't see them. If there is an inconsistency, we catch it so you don't have to.

The practicality of all this quite simple: Your flooring installations deliver consistently superior performance and demand less installation time. Your customer enjoys a great vinyl or ceramic tile floor that starts beautiful and stays beautiful for years to come.

Want to know more? Contact your MATRIXX™ Engineered Underlayment distributor today for more information.



- *Lifetime Warranty*
- *Meets All Vinyl Manufacturers' Requirements*
- *Meets All Tile Council of America Requirements*
- *Precision Cut for a TileTite™ Fit*
- *Rugged Solid Core Construction*
- *100% Premium Russian Birch*
- *Exterior Grade Glue*

## **MATRIXX™ Engineered Underlayment**

*Strength & Reliability – Even Where You Can't See it.*

**888-872-9926**

1201 East Lexington Avenue • Pomona, CA 91766 USA  
P 909-623-8032 • F 909-623-8074 • [www.traxxcorp.com](http://www.traxxcorp.com)

**TRAXX**  
CORPORATION